

24kV Straight connector

Application

Straight connectors are made of EPDM rubber in 3 layers, inner conductive layer, insulating layer and outer conductive layer.

Supplied completed kit with plug-in connection for one or three-core XLPE/EPR cable up to 24kV with Al or Cu conductors. Elbow connectors are used in rain main unit and pad-mounted transformer. It fits for standard bushings with interface type "A" .

Standard

Meets the requirements of

- IEC 60502.4
- CENELEC, EN50180

Test

Tests are conducted in accordance with standard IEC 60502.4

- Rated voltage 24kV
- Rated current 250A
- AC withstand voltage 54kV/5mins
- Partial discharge at 24kV $\leq 10\text{pC}$
- Visual inspection

Feature

- Fully insulated, fully sealed and fully screened
- Excellent stress control
- Easy and safe installation
- Compact design
- Long shelf life
- No special tool

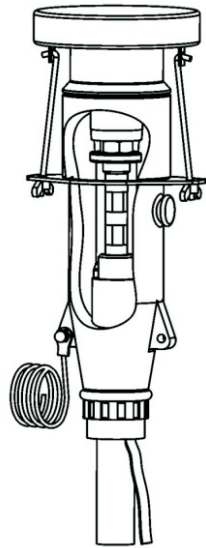


Type No.: AZC-24/250

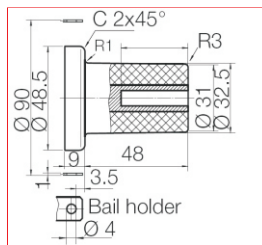
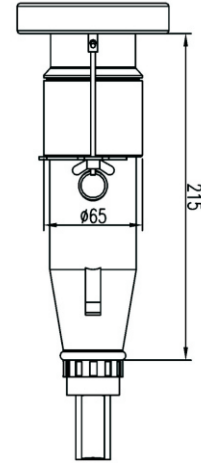
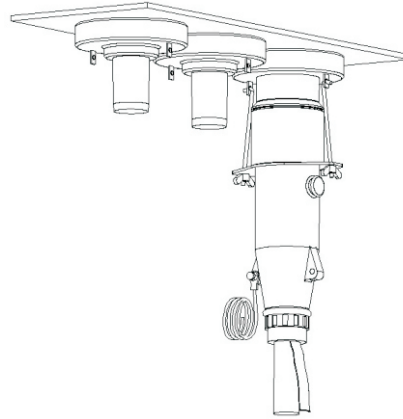
Conductor cross section mm ²	XLPE/EPR diameter mm	Material	Bushing type	Weight kg/item
35-70	18-20.8	EPDM	Plug -in $\Phi 7.9$	
95-120	22.5-23.9	EPDM	Plug -in $\Phi 7.9$	

Dimensions and accessories

All dimensions in mm



AZC-24/250A



Standard bushing EN 50181
200 series 250 A
Contact type: Plug-in ϕ 7.9mm
Interface type: A



Cable lug and Linking rod



Compression board and Bolt & Nut



Tube spanner

Description	Specification	Material	Quantity pcs	Weight kg/pcs
Cable lug	As per request	Cu or Al*M8	3	
Compression board		Steel	3	
Bolt & Nut	L=115mm*M5	Steel	6	
Tube spanner		Steel	1	